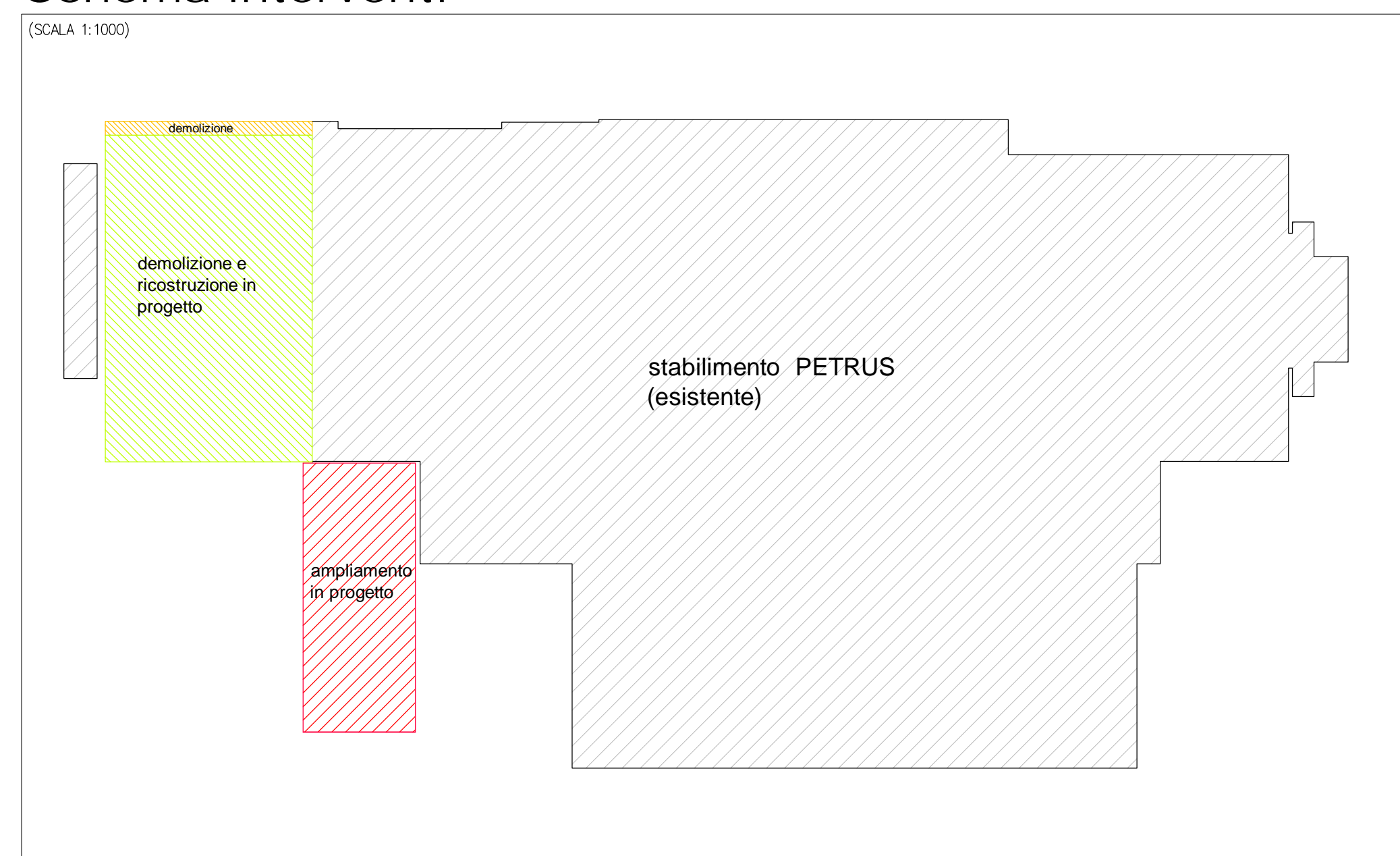


Firmato elettronicamente secondo le norme vigenti. Certificato rilasciato da InfoCerti S.p.A. Il Pregevole doc. arch. Elia Barbieri (da sottoscrivere in caso di stampa) : La presente copia, composta da n. \_\_\_\_\_ fogli, è conforme all'originale firmato digitalmente.

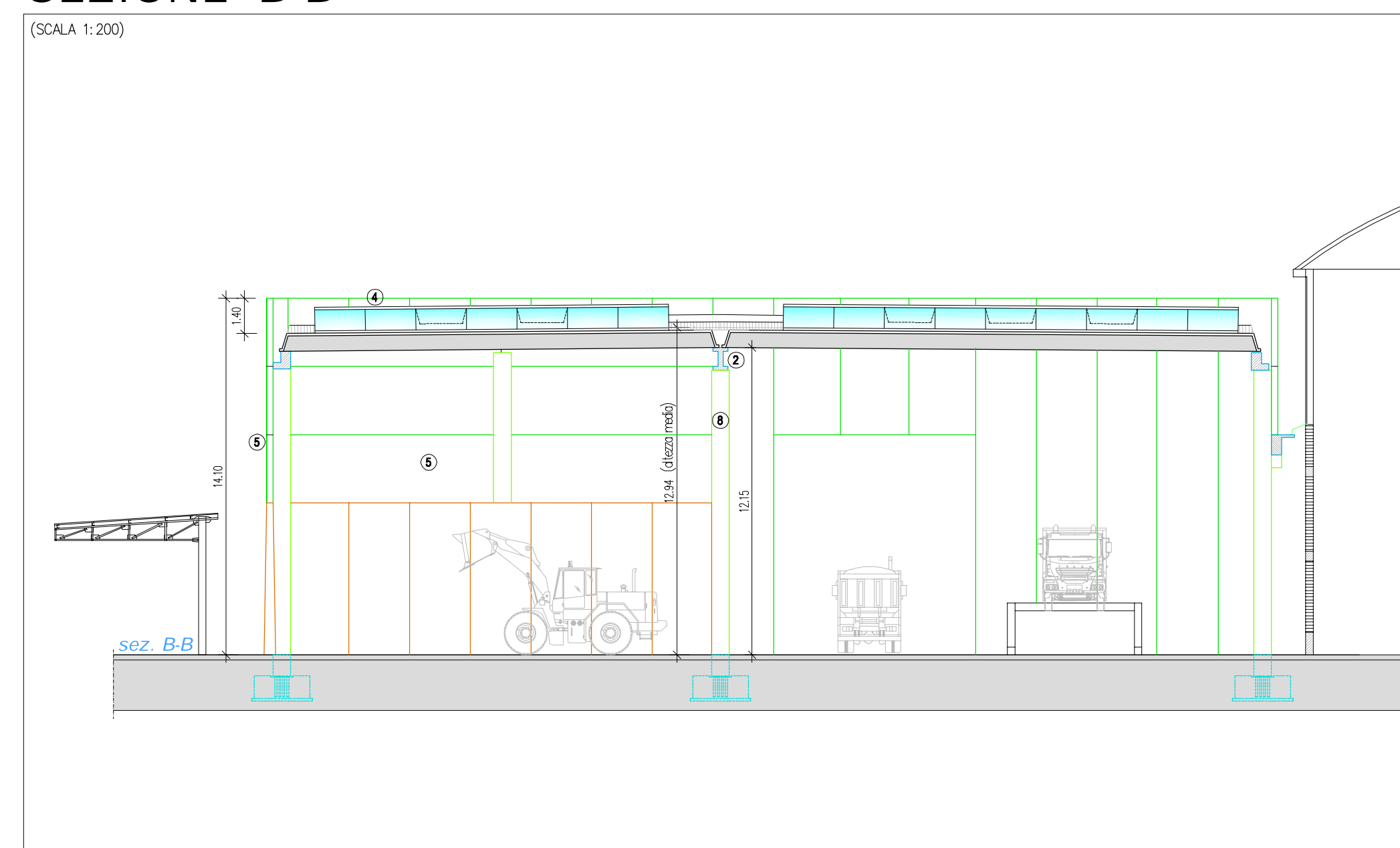
CONSERVATORI • ORDINE DEGLI ARCHITETTI  
PROVINCIA DI AREZZO  
ARCHITETTO  
ELISA BARBIERI  
1179

*Elisa Barbieri*

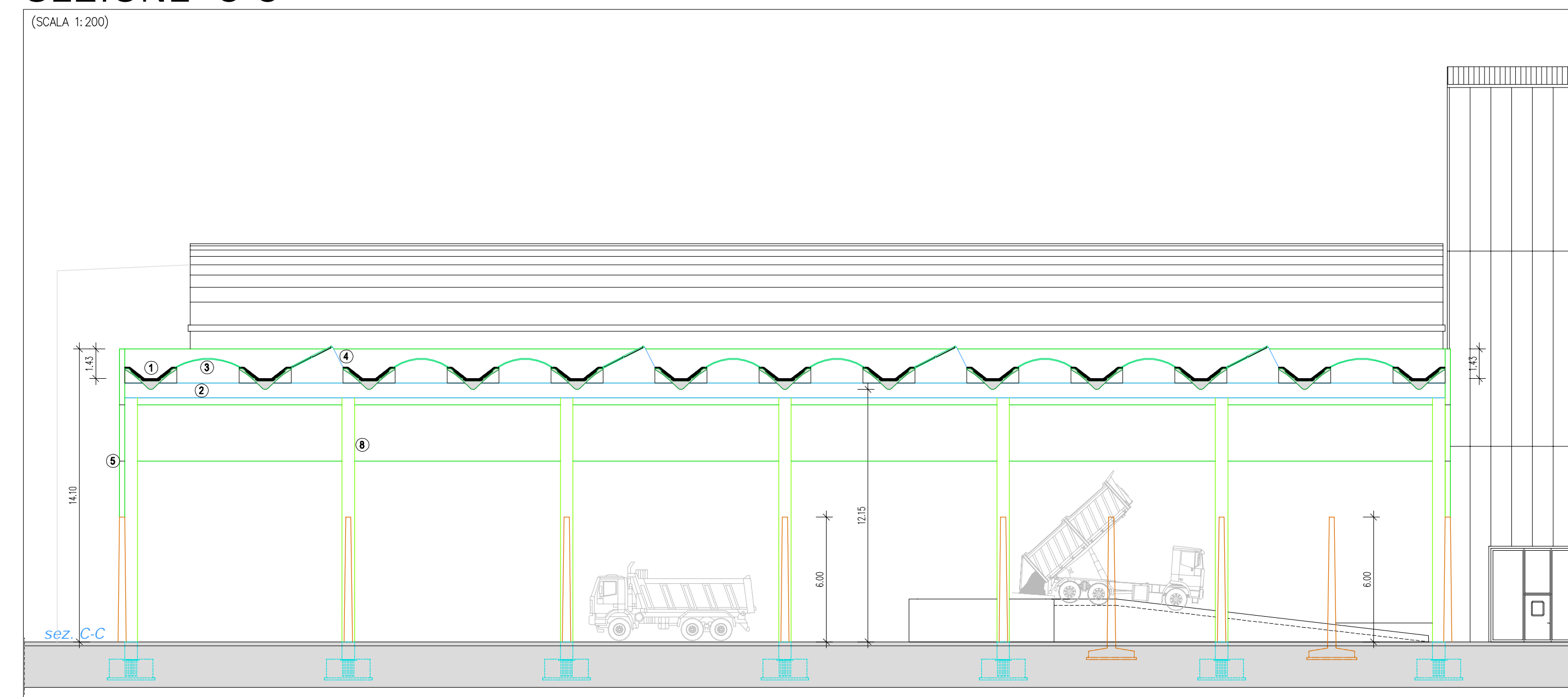
## Schema interventi



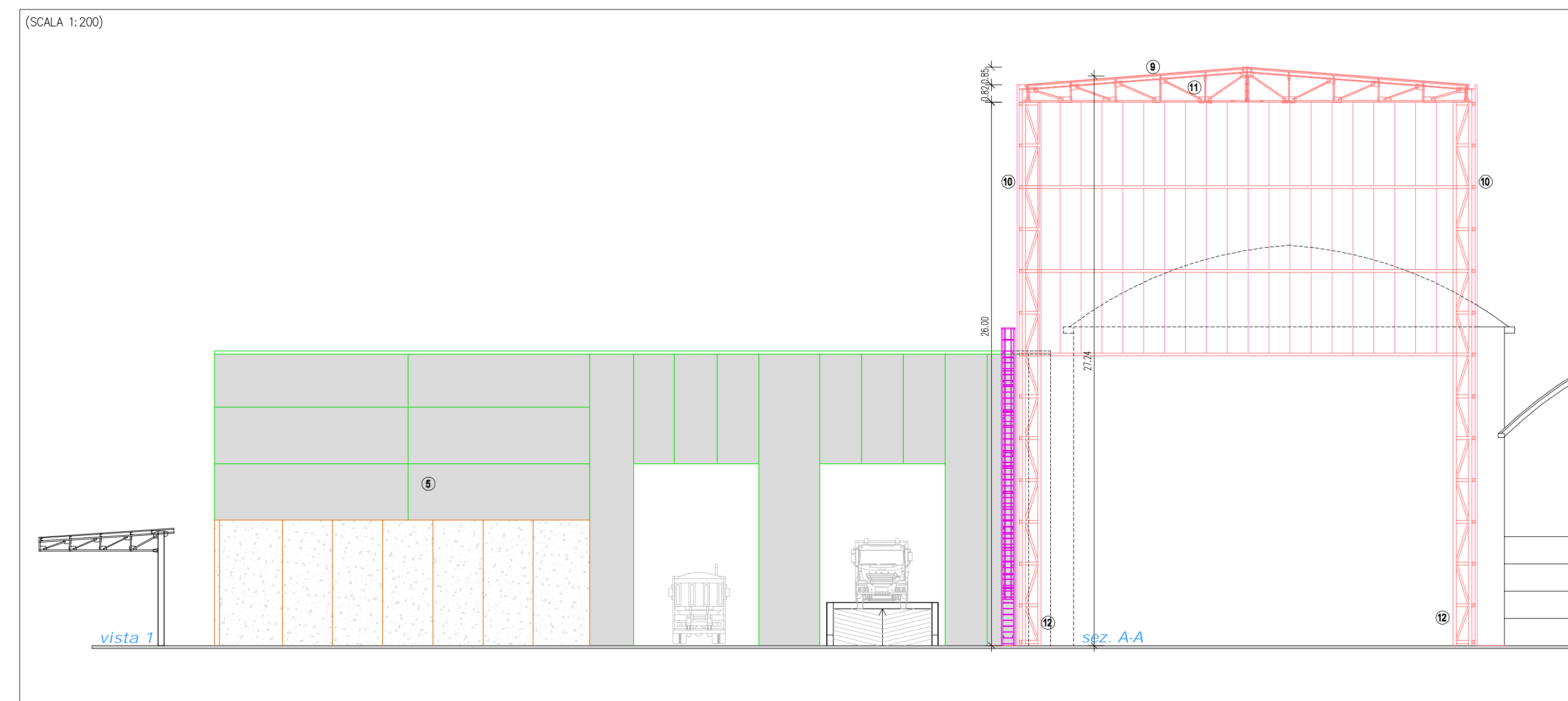
SEZIONE B-B



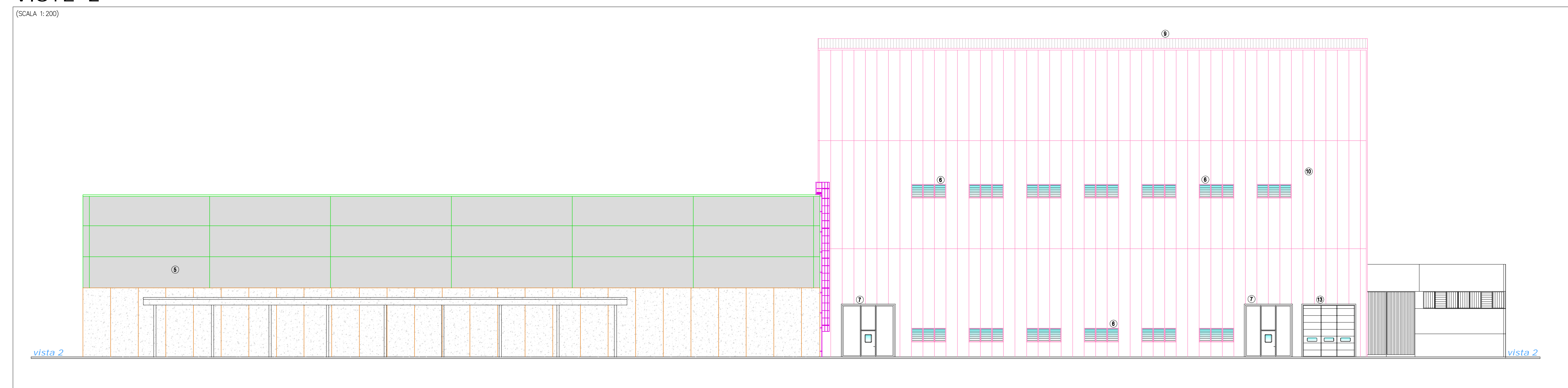
## SEZIONE C-C



SEZIONE A-A - VISTA 1



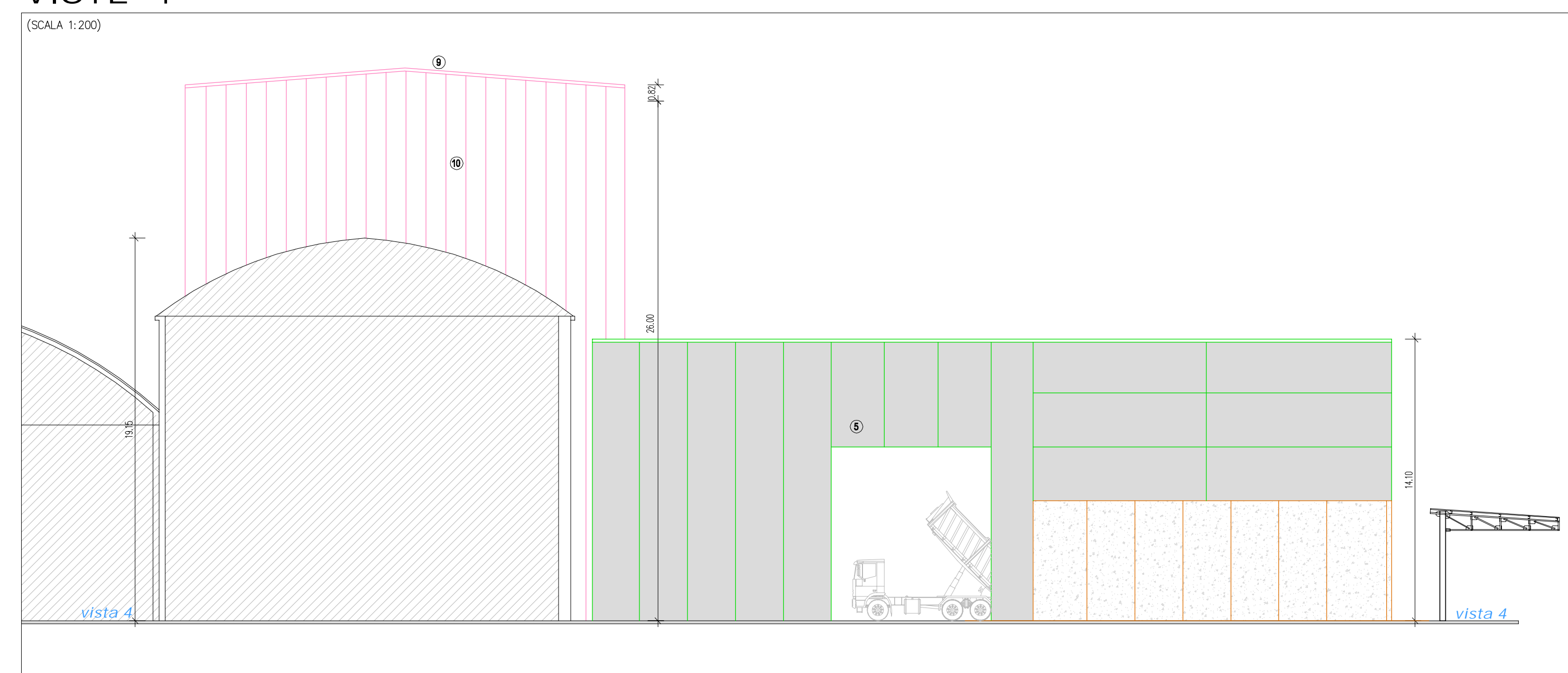
## VISTE 2



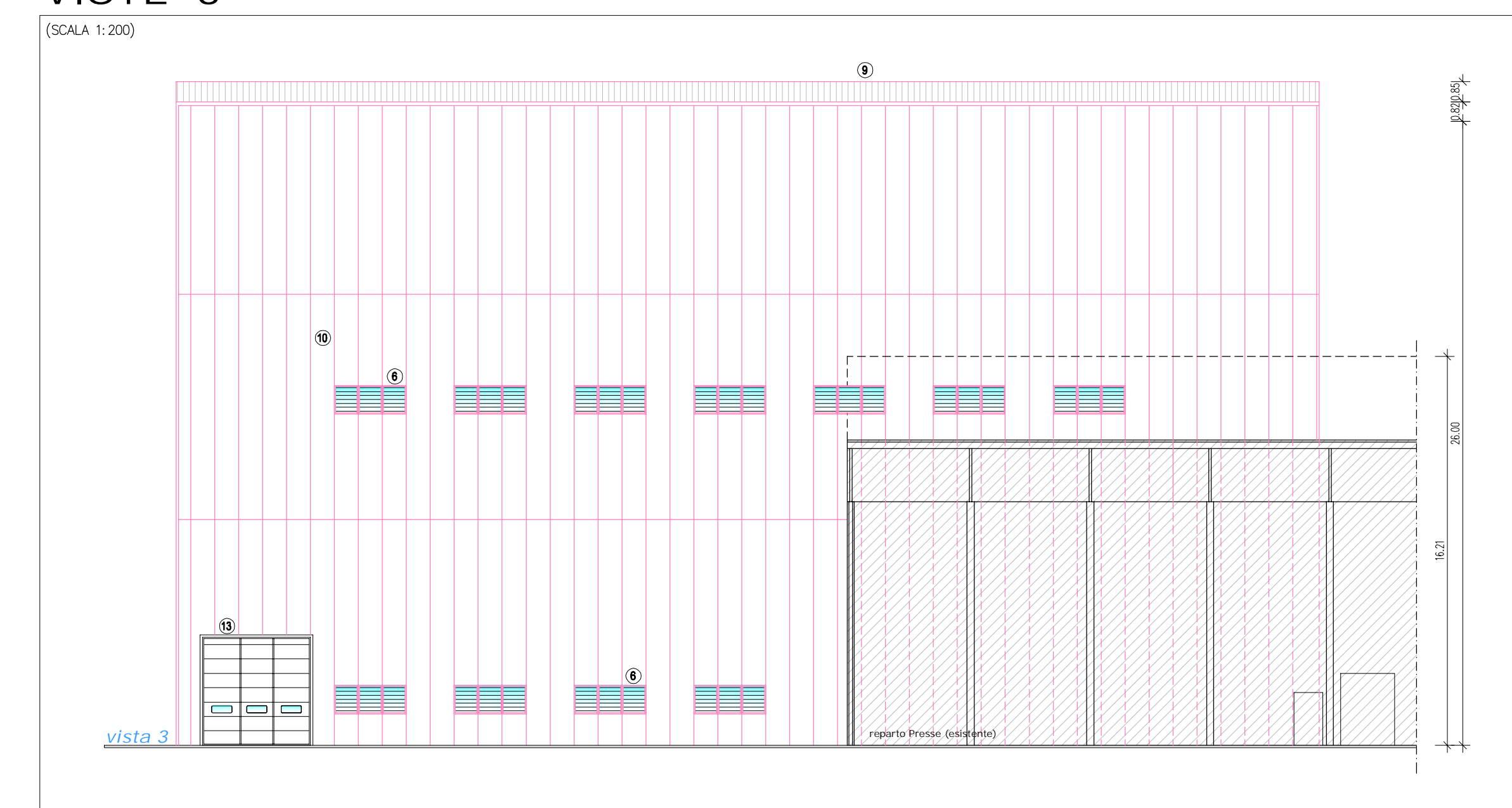
## VISTE 1



## VISTE 4



## VISTE 3



## PIANTA

